

38.1 (1.5)

79.4 (3.125)

Front

Side

LED1
LED2
LED3

Rear

5 (0.2)

25.4 (1)

6 (0.24)

1

Metal tapped bushes M3
for attachment + connection

Pin spacing 2.54 (0.1)
Pin diameter 0.8 (0.032)

16.3 (0.64)

Recommended drill diameters
 Pins (soldered): >1.0 (0.039)
 Pins with Sockets: 1.6 (0.063)
 Screw holes: 3.5 (0.14)

LED1 - Green, Ready / Power
 LED2 - Yellow, Sw. Triggered
 LED3 - Green, Fault Condition
 Pin1 - Trigger (TTL)
 Pin2 - GND (Logic)
 Pin3 - + 5.00 VDC
 Pin4 - Fault Signal
 Pin5 - Reserved/N.C.
 Pin6 - Reserved/N.C.

CAUTION
 Isolation voltage of housing is
 5 kVDC only. Do not touch module
 and keep metallic parts away!

All dimensions in mm and (inches).
 Reduced housing height optionally available.
 Metrical screws (M3) and miniature spring sockets (AMP 1.6mm)
 for printed circuit boards are included in supply.

Top
(Label)

1

GND/Earth

Bottom

+HV

-HV

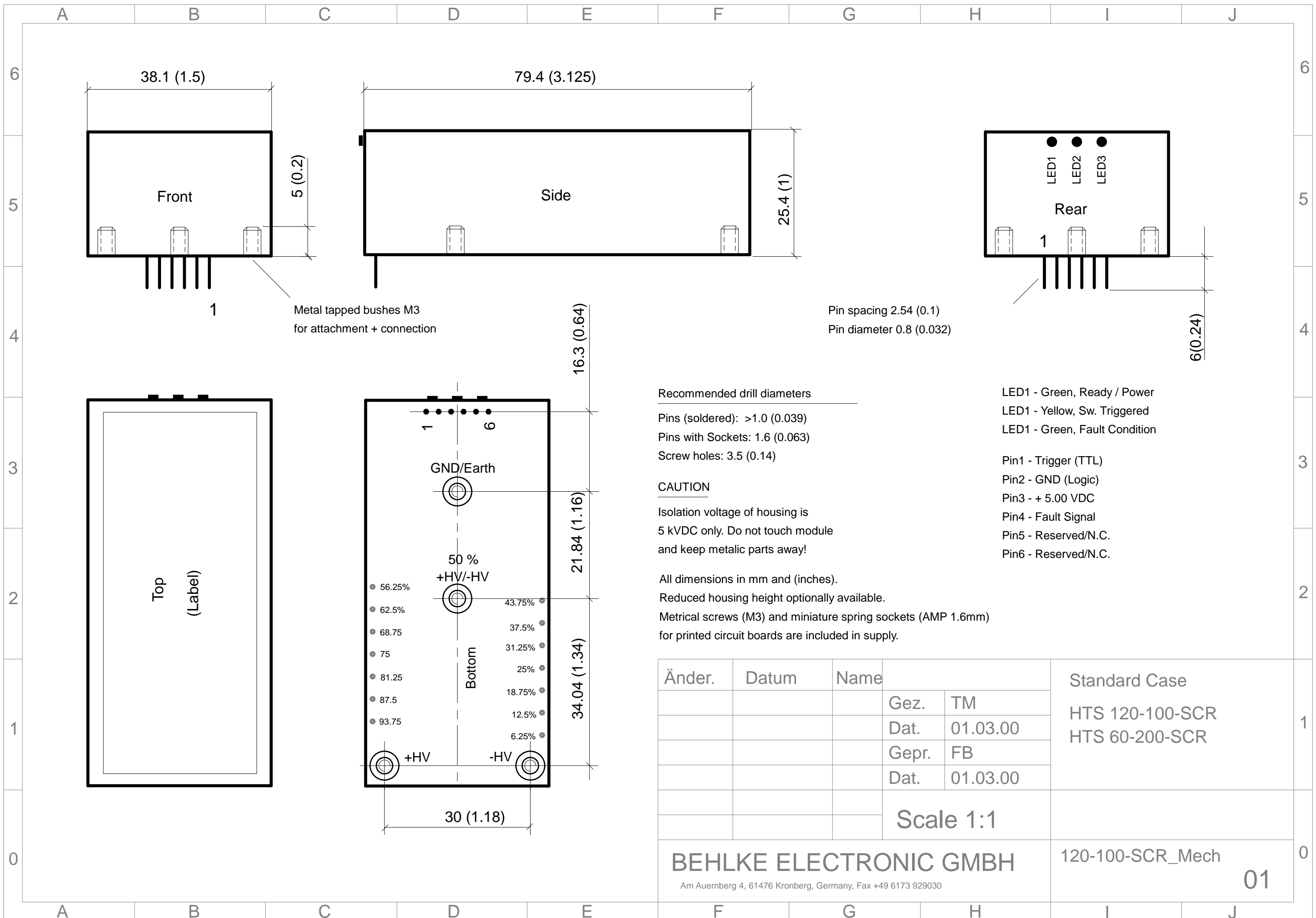
55.88 (2.2)

30 (1.18)

Änder.	Datum	Name			Standard Case HTS 120-100-SCR HTS 60-200-SCR
			Gez.	TM	
			Dat.	01.03.00	
			Gepr.	FB	
			Dat.	01.03.00	Scale 1:1

BEHLKE ELECTRONIC GMBH
 Am Auernberg 4, 61476 Kronberg, Germany, Fax +49 6173 929030

120-100-SCR_Mech **01**



Metal tapped bushes M3
for attachment + connection

Pin spacing 2.54 (0.1)
Pin diameter 0.8 (0.032)

Recommended drill diameters
Pins (soldered): >1.0 (0.039)
Pins with Sockets: 1.6 (0.063)
Screw holes: 3.5 (0.14)

CAUTION
Isolation voltage of housing is
5 kVDC only. Do not touch module
and keep metallic parts away!

All dimensions in mm and (inches).
Reduced housing height optionally available.
Metrical screws (M3) and miniature spring sockets (AMP 1.6mm)
for printed circuit boards are included in supply.

LED1 - Green, Ready / Power
LED1 - Yellow, Sw. Triggered
LED1 - Green, Fault Condition

Pin1 - Trigger (TTL)
Pin2 - GND (Logic)
Pin3 - + 5.00 VDC
Pin4 - Fault Signal
Pin5 - Reserved/N.C.
Pin6 - Reserved/N.C.

Änder.	Datum	Name			Standard Case HTS 120-100-SCR HTS 60-200-SCR
			Gez.	TM	
			Dat.	01.03.00	
			Gepr.	FB	
			Dat.	01.03.00	
Scale 1:1					